

## Homase Mine – September 2024



Pit 1. 100,000 tonnes @ 1.4g/t Remaining  
Water roughly 10m deep at south end and  
5m deep at north end



Homase Mine with Pit 2, foreground, and Pit 1  
in the background.



Homase Mine - Pit 2 @1.1g/t down to water table so starting to pump.



Rompad in the foreground. Heapleach pads in the background and Pit 2 on the RHS







Heap Pads 3 and 4 and land conveyor.

Feed to screen, agglomeration and cement feed



Back of Pads 3 and 4



Superintendent monitoring the feed



Cell 5. In-filling the gap to Cell 4 for continuous stacking



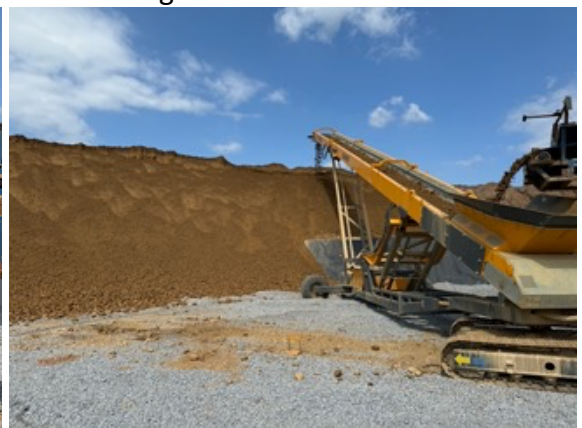




Cell 5. Stacking started and aggregate protective layer on the collection pipes



Pad 5 preparation of the leaching process, aggregate layer has to be laid to protect the liner and the collection pipes. Stacking has commenced – getting production moving



Stacked agglomerated ore



Stacking Superintends monitoring production



Pregnant, Barren and Excess ponds. With Absorption Plant.

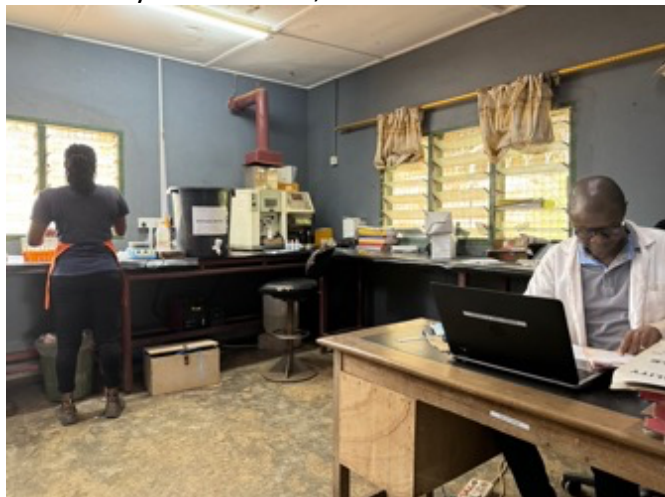




Pressurised 1 tonne Zadre Elution plant that feeds the Electrowinning Room



Laboratory – Bottle Roll, Muffle Furnace and Column Leach



Lab Manager and assistant with AA Machine and Micro Balance for Bullion Assay