



**GoldStone Akrokeri Limited  
Homase Mine  
Elution Plant and Smelt House**

**September 2021**





Site under construction

Raw Water Feed



Installation of Elution and Acid Wash Columns and Eluate tanks and Compressor



Elution and Acid Wash Columns and the workers



Pipework of Acid Wash and Elution



Caustic Tank



Eluant Tank

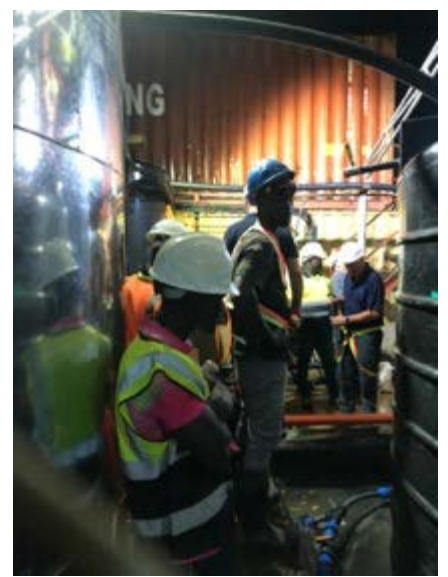
Acid Tank



Electricians



Monitoring the engineering



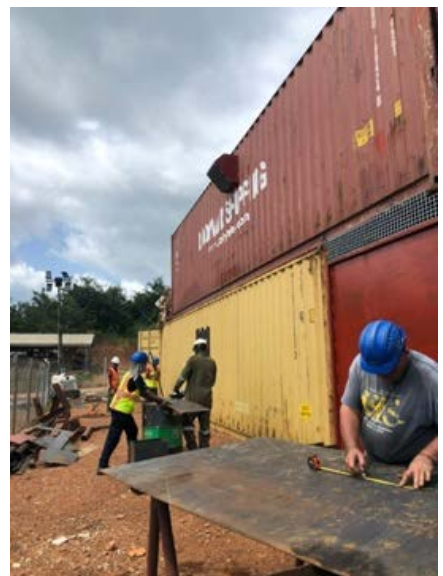
Elution Column being insulated



Induction Furnace



On site Workshops





Elution and Electric Panel



Heating Elements for Eluant Tank



Workshop



walkway between eluant tank and caustic tanks



Workshop



Generator



Effluent tanks in bund



Laboratory



Laboratory



Electrowinning



Rectifiers being commissioned



Site Under Commission